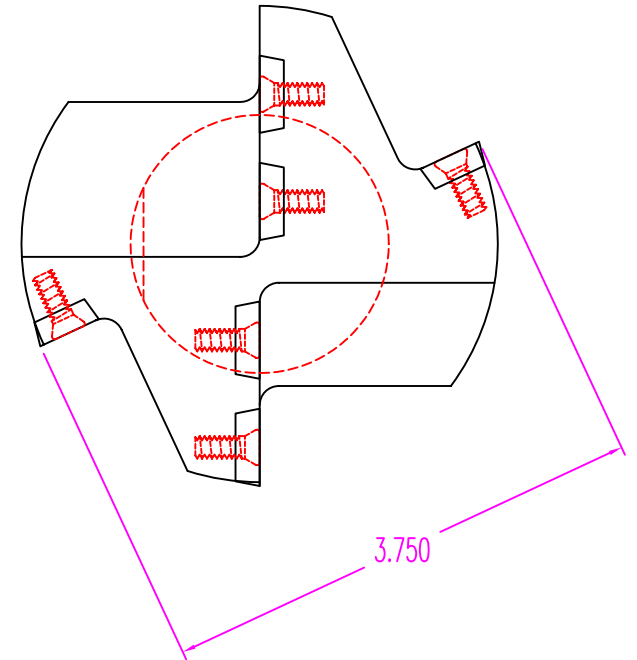


0° LEAD INSERTS: 2 EFFECTIVE
ALL 70° LEAD INSERTS: 1 EFFECTIVE

Ø.47 MIN. CUT



T & A TOOL, INC.

Manufacturers of Special Carbide Indexable Insert Tooling

TOOL DESC: Ø3.75, 0° / 70° COMBINATION MILL

INSERT: SPEB 432 (6) SCREW: PT-319T, M5 (6)